



Middle Street, Betchworth

£425,000





“

This is a home that feels both welcoming and full of character – a little slice of village life in a setting that’s hard to beat.

”



Tucked away in the sought after village of Brockham, this enchanting two-bedroom period cottage offers a wonderful blend of character and modern comfort. Step inside through the porch and you'll find a cosy sitting room, warmed by a feature fireplace and filled with natural light from the front, where the outlook takes in the charm of the village and surrounding countryside. Beyond, a hallway leads you to the modern bathroom and the staircase to the first floor.

The kitchen sits at the back of the house and feels like the heart of the home. Recently updated, it combines timeless style with practical design, with sleek cabinetry, granite worktops, and integrated appliances. The stable-style door opens directly into the garden – perfect for summer suppers or morning coffee in the fresh air.

Upstairs, there are two double bedrooms the front bedroom is particularly special, with far-reaching views across the recreation ground and fields, and a decorative fireplace adding a touch of period charm and the second bedroom benefitting from floor to ceiling bespoke built fitted wardrobes.

Outside, the garden is designed for easy enjoyment, with a mix of terrace, astro-turf lawn, and pretty borders. At the far end, a detached garden room/utility offers wonderful versatility, whether as a peaceful home office, a creative studio, or simply a practical space for everyday use. Off-street parking to the front and side/rear access add convenience.



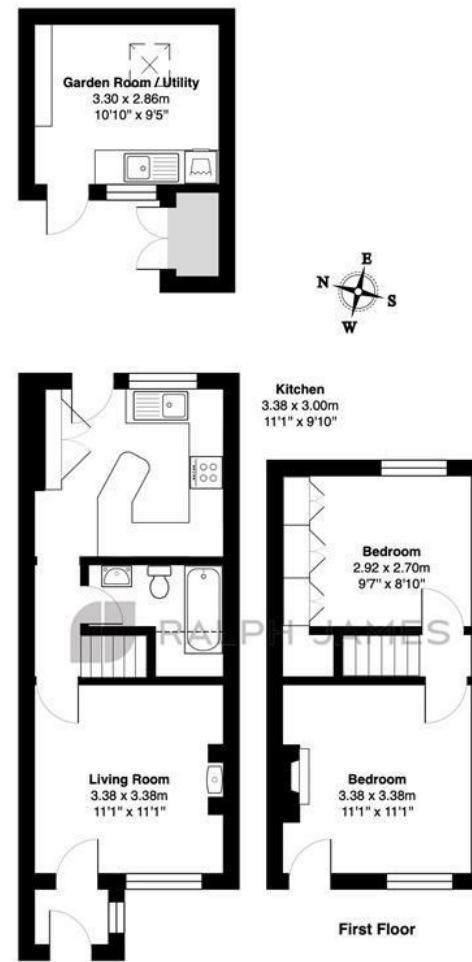
Need to know

- Charming Victorian two-bedroom cottage in the heart of Brockham village
- Picturesque outlook across the village green and surrounding countryside
- Cosy sitting room with feature fireplace and welcoming ambience
- Modern ground floor bathroom with stylish finish
- Recently updated kitchen with granite worktops, integrated appliances, and stable-style door to garden
- Two well-proportioned double bedrooms, main with decorative fireplace and far-reaching views and the second with floor to ceiling bespoke built fitted wardrobes
- Secluded rear garden with terrace, astro-turf lawn, and mature planting
- Detached garden room/utility – ideal for a home office, studio, or flexible living space
- Off-street parking to the front, plus side and rear pedestrian access

Interested?

dorking@ralphjames.co.uk
01306 284555

ralphjames.co.uk



Ground Floor

Middle Street, Brockham, Betchworth

Total Area: 55.3 m² ... 595 ft² (excluding garden room / utility)

FOR ILLUSTRATIVE PURPOSES ONLY.

Whilst every attempt has been made to ensure the accuracy of the floor plan shown, all measurements, positioning, fixtures, features, fittings and any other data shown are an approximate interpretation for illustrative purposes only and are not to scale.

No responsibility is taken for any error, omission, miss-statement or use of data shown.

The above statement applies to both 'Still Moving London LTD' and the Company or individual displaying this floor plan.

Unauthorised reproduction prohibited.

Â© Still Moving London LTD (www.stillmoving.london)

 RALPH JAMES